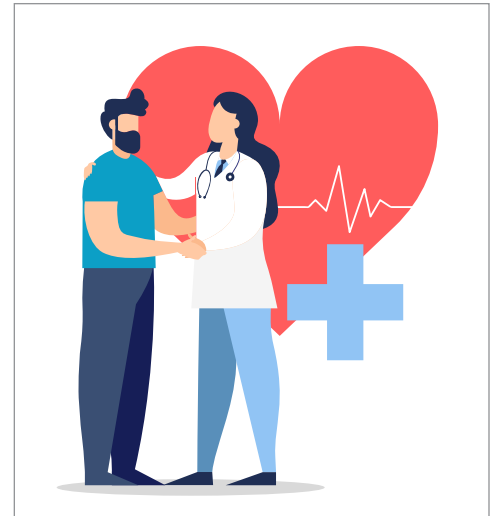




Welcome to UNITE HERE HEALTH

You have new health insurance through
Encore Boston Harbor and UNITE HERE Local 26.

If you don't enroll, you'll lose coverage!



Enroll February 21 – March 11, 2022 or you won't be covered!



How to enroll (starting February 21):

- Visit uhh.org/encore
- Or call our dedicated enrollment hotline: **(855) 321-4373**

Enrolled? Now choose a PCP (starting February 28):

Enrolling online or by phone is the first step in enrollment. You must also choose a Primary Care Provider (PCP) from the Tufts EPO Select Network. Fund and union staff will be onsite February 28 – March 11 to help you find a Tufts PCP. Watch for event details.

What we offer

Your Local 26 bundled healthcare package includes:

For you and your family

- Medical
 - Tufts EPO Select Network with no deductible
 - \$0 copay for most treatment (see the "Benefits at a Glance" inside for details)
- Prescription Drug—Hospitality Rx
- Dental PPO—Delta Dental
- Vision—Davis Vision
- FREE Employee Assistance Program

For employees only

- Short-term disability: \$500 week/26-week max
- Life insurance and accidental death & dismemberment: \$5,000, \$10,000 or \$35,000 based on your years of service

Who we are

For several decades, UNITE HERE HEALTH (the Fund) has served UNITE HERE! union workers in the hospitality, food service, and gaming industries. You'll be joining over 8,000 members and their dependents in the Fund's Greater Boston Plan.

What coverage costs

- *Single:*
\$16/month
- *Single + 1:*
\$32/month
- *Family:*
\$48/month
- *Two-way:*
\$8/month for Life/ADD/STD only (only available if you and your spouse are both covered under Plan 108)

For more info, visit:
uhh.org/encore

What's different? Things to keep in mind:

- When you enroll, **you MUST choose a Primary Care Provider (PCP)** from the Tufts EPO Select Network and register your doctor with Tufts.
- Until you choose a PCP, only emergency services will be available to you with a \$100 copay.
- The Tufts network may be different than your current network. If so, **you may have to find a new doctor(s)**. If you need to make a switch, representatives from Tufts Health Plan will be onsite at Encore between 2/28 – 3/11.
- To see a specialist, you must get a referral from your PCP.

When benefits start

- **Your new benefits start May 1**, as long as you enroll and turn in proof documents (marriage/birth certificates) by March 11.
- Once you enroll, you'll be covered for three months: May, June and July of 2022. To continue your benefits, you'll need to work **or** be credited with 80 hours each work month.

Special Enrollment Rights

If you choose not to sign up for healthcare coverage under UNITE HERE HEALTH at this time because you already have other health insurance coverage, you may be able to enroll yourself and/or your dependents at a later time if you lose the other coverage.

You may also request special enrollment to enroll yourself and/or your dependents in the UNITE HERE HEALTH plan if you have one of these qualifying life events:

- A marriage.
- A childbirth.
- An adoption or placement for adoption of a child under age 26.
- A child that use to live in a foreign country comes to the United States to live with you.
- You or your dependents lose eligibility for Medicaid or Children's Health Insurance Program (CHIP).
- You or your dependents become eligible for state financial assistance under Medicaid or a CHIP to help pay for the cost for UNITE HERE HEALTH's coverage.

You must send UNITE HERE HEALTH a request for special enrollment within 60 DAYS after you lose your other coverage or a qualifying life event happens. *Due to the national emergency, you may have more time.*

